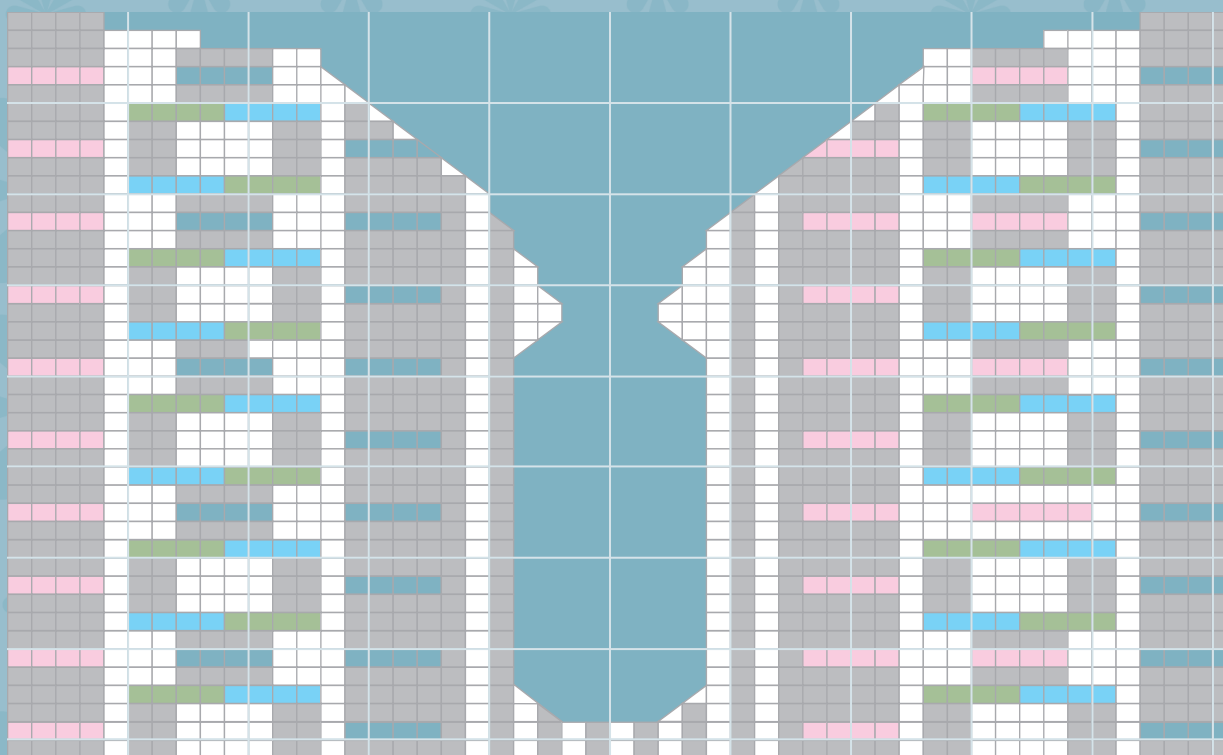


Cabled Bodies 51 sts x 41 rows

Work in st st. Each square = 1 st and 1 row.



 **Knit on RS, purl on WS**

 **Purl on RS, knit on WS**

 **Cable A**

 **Cable B**

 **Cable C**

 **Cable D**

 **Decrease stitch**

Cable A

Sl 2 st to cn, hold cn forward, k2, k 2 from cn.

Cable B

Sl 2 st to cn, hold cn back k2, k2 from cn.

Cable C

Sl 2 st to cn, hold cn forward, p2, k2 from cn.

Cable D

Sl 2 st to cn, hold cn back, k2, p2 st from cn.

